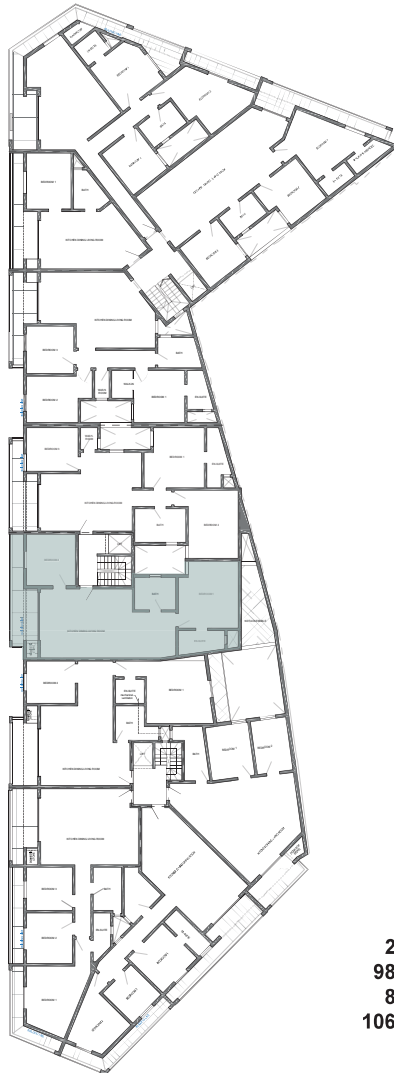


# APARTMENT B2 / B4 / B6



**€225,000**  
APARTMENT B2

**€235,000**  
APARTMENT B4

**€245,000**  
APARTMENT B6

- 2 NO. OF BEDROOMS
- 98 GROSS INT. AREA
- 8 EXTERNAL AREAS
- 106 TOTAL AREA

